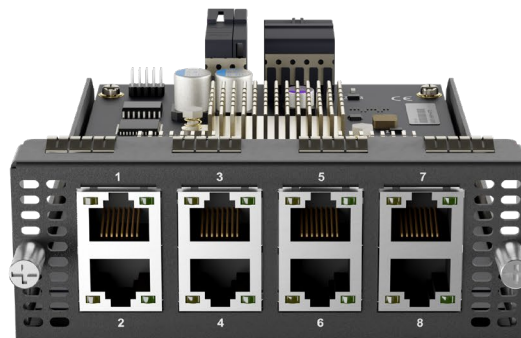


8x GE PoE+ Module (EXM-8C)

Interface	8x 10/100/1000M Ethernet Ports* Capable of PoE+
Power Consumption	15 W (Max. 240W, 30W / PoE+ port, total 8 PoE+ ports)
Dimension (L x W x H)	4.1 x 7.4 x 1.5 inches / 103 x 188 x 38 mm
Weight	1.1 pounds / 0.475 kg

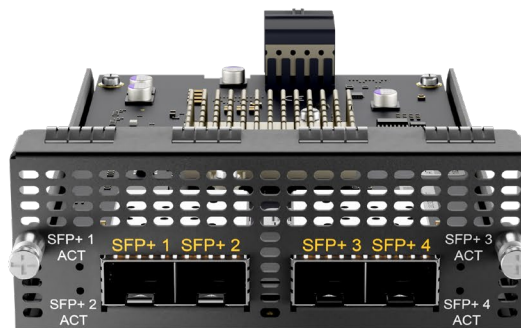
*Module can be configured with LAN or WAN ports as needed.



4x SFP+ Module (EXM-4F)

Interface	4x SFP+ Ports*
Power Consumption	11 W
Dimension (L x W x H)	4.1 x 7.4 x 1.5 inches / 103 x 188 x 38 mm
Weight	0.83 pounds / 0.375 kg

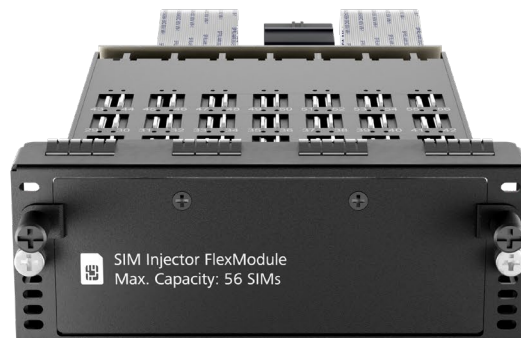
*Module can be configured with LAN or WAN ports as needed.



SIM Injector FlexModule (EXM-SIM-BK56)

SIM Slot Capacity	56 4FF Nano SIM Cards
Power Consumption	15 W
Dimension (L x W x H)	4.1 x 7.4 x 1.5 inches / 103 x 188 x 38 mm
Weight	1.30 pounds / 0.6 kg

*Compatible with EPX, SDX (HW3) and SDX Pro.



Ordering Information

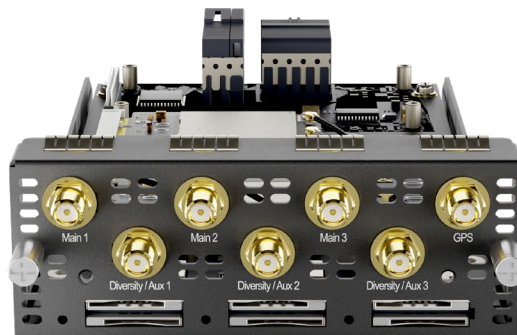
Product Code	Description
EXM-8C	Expansion Module with 8x GE PoE ports
EXM-4F	Expansion Module with 4x SFP+ ports
EXM-SIM-BK56	Expansion Module with 56 SIM slots

CAT-6

CAT-12

3x LTE-A Module (EXM-3LTEA)

Interface	3x Embedded Cellular Modems with Redundant 2FF Mini SIM Slots
Antenna Connectors	6x SMA Cellular Antenna Connectors 1x SMA GPS Antenna Connector
Downlink/Uplink Data Rate	300 Mbps / 50 Mbps (CAT-6) 600 Mbps / 150 Mbps (CAT-12)
Power Consumption	20 W
Dimension (L x W x H)	4.1 x 7.4 x 1.5 inches / 103 x 188 x 38 mm
Weight	0.83 pounds / 0.375 kg



Ordering Information

Product Code	Regions	LTE Bands	3G Bands
EXM-3LTEA-W Embedded Modem(s): 3x LTE-A (CAT-6)	America / Europe	B1, B2, B3, B4, B5, B7, B8, B12, B13, B20, B25, B26, B29, B30, B41	WCDMA / HSPA+ / DC-HSPA+: B1, B2, B3, B4, B5, B8
EXM-3LTEA-P Embedded Modem(s): 3x LTE-A (CAT-6)	Asia Pacific	B1, B3, B5, B7, B8, B18, B19, B21, B28, B38, B39, B40, B41	WCDMA / HSPA+ / DC-HSPA+: B1, B5, B8, B9, B19 UMTS: B6 TD-SCDMA: B39
EXM-3LTEA-R Embedded Modem(s): 3x LTE-A Pro (CAT-12)	America / FirstNet	B1, B2, B3, B4, B5, B7, B8, B9, B12, B13, B14, B18, B19, B20, B26, B29, B30, B32, B41, B42, B43, B46, B48, B66	HSPA+: B1, B2, B4, B5, B6, B8, B9, B19

CAT-12

4x LTE-A Pro Module (EXM-4LTEA)

Interface	4x Embedded LTE-A Cellular Modems with Redundant 4FF Mini SIM Slots
Antenna Connectors	8x SMA Cellular Antenna Connectors 1x SMA GPS Antenna Connector
Downlink/Uplink Data Rate	600Mbps / 150 Mbps (CAT-12)
Power Consumption	20W
Dimension (L x W x H)	4.1 x 7.4 x 1.5 inches / 103 x 188 x 38 mm
Weight	0.83 pounds / 0.375 kg



CAT-20

2x LTE-A Pro Module (EXM-2GLTE-S)

Interface	2x Embedded LTE-A Cellular Modems with Redundant 4FF Nano SIM Slots
Antenna Connectors	8x SMA Cellular Antenna Connectors 1x SMA GPS Antenna Connector
Downlink/Uplink Data Rate	1.2 Gbps / 150 Mbps (CAT-18)
Power Consumption	20W
Dimension (L x W x H)	4.1 x 7.4 x 1.5 inches / 103 x 188 x 38 mm
Weight	0.83 pounds / 0.375 kg



Ordering Information

Product Code	Regions	LTE Bands	3G Bands
EXM-4LTEA-D Embedded Modem(s): 4x LTE-A Pro (CAT-12)	APAC & EMEA	B1, B2, B3, B4, B5, B7, B8, B9, B12, B13, B14, B17, B18, B19, B20, B21, B25, B26, B28, B29, B30, B32, B38, B39, B40, B41, B66	HSPA+ : B1, B2, B3, B4, B5, B8, B9, B19
EXM-4LTEA-R Embedded Modem(s): 4x LTE-A Pro (CAT-12)	America / FirstNet	B1, B2, B3, B4, B5, B7, B8, B9, B12, B13, B14, B18, B19, B20, B26, B29, B30, B32, B41, B42, B43, B46, B48, B66	HSPA+ : B1, B2, B4, B5, B6, B8, B9, B19
EXM-2GLTE-S Embedded Modem(s): 2x LTE-A Pro (CAT-20)	Global	B1, B2, B3, B4, B5, B7, B8, B12, B13, B14, B17, B18, B19, B20, B25, B26, B28, B29, B30, B32, B34, B38, B39, B40, B41, B42, B46 (LAA), B48, B66, B71	HSPA+/ WCDMA : B1, B2, B3, B4, B5, B6, B8, B9, B19

5G

2x 5G Module (EXM-2X5G)

Interface	2x Embedded Cellular Modems with Redundant 4FF Mini SIM Slots
Antenna Connectors	8x SMA Cellular Antenna Connectors 1x SMA GPS Antenna Connector
Downlink/Uplink Data Rate	4 Gbps / 700 Mbps (5G) 2 Gbps / 150 Mbps (CAT-20)
Power Consumption	20W
Dimension (L x W x H)	4.1 x 7.4 x 1.5 inches / 103 x 188 x 38 mm
Weight	0.83 pounds / 0.375 kg



Ordering Information

Product Code	Regions	5G Bands	LTE Bands
EXM-2X5GD Embedded Modem(s): 2x 5G	Primary: APAC & EMEA Compatible: Global	5G (NSA) Sub 6Ghz: n1, n2, n3, n5, n7, n8, n12, n20, n28, n38, n41, n66, n71, n77, n78, n79	B1, B2, B3, B4, B5, B7, B8, B12, B13, B14, B17, B18, B19, B20, B25, B26, B28, B29, B30, B32, B34, B38, B39, B40, B41, B42, B46, B66, B71
EXM-2X5GH Embedded Modem(s): 2x 5G	Primary: North America Compatible: Global	5G (NSA) Sub 6Ghz: n1, n2, n3, n5, n28, n41, n66, n71, n77, n78, n79	B1, B2, B3, B4, B5, B7, B8, B12, B13, B14, B17, B18, B19, B20, B25, B26, B28, B29, B30, B32, B34, B38, B39, B40, B41, B42, B46, B48, B66, B71

1x MFA Module with 1TB SSD (EXM-LCDT)

Power Consumption	6W (without SSD)
Dimension (L x W x H)	4.1 x 7.4 x 1.5 inches / 103 x 188 x 38 mm
Weight	0.88 pounds / 0.4 kg

* The expansion LCD module comes with a license key to enable MediaFast, Docker, Python and KVM for edge computing. The license is tied to the EPX.



Ordering Information

Product Code	Description
EXM-LCDT	Expansion Module with 1TB SSD and LCD Controls. Support Docker, Python and KVM for edge computing. (Replaces the existing LCD module)